



P/N	DESCRIPTION
3000002	HEADGEAR – MODEL K – CLEAR <ul style="list-style-type: none"> • Secures 12" or 15.5" faceshields • Wrap-around foam cushioned sweatband
3000048	GOGGLES – REVOLUTION – CLEAR <ul style="list-style-type: none"> • Keeps air flowing in and moisture out • Anti-fog, anti-scratch, anti-static lens coating • Expanded visual field • Polycarbonate lens provides impact protection
3000287	SAFETY GLASSES – CUDAS – CLEAR <ul style="list-style-type: none"> • Lens curve provides protection and peripheral vision • Durable nylon frame • Individual fit with adjustable temples (5 different lengths)
3000304	SAFETY GLASSES – VISIO – CLEAR – ANTI-FOG
3000306	SAFETY GLASSES – VISIO – SMOKE – ANTI-FOG <ul style="list-style-type: none"> • Polycarbonate lens • Adjustable temples and wrap-around protection • Lightweight, comfortable fit
3000355	SAFETY GLASSES – NEMESIS – CLEAR
3000356	SAFETY GLASSES – NEMESIS – SMOKE
3000359	SAFETY GLASSES – NEMESIS – AMBER <ul style="list-style-type: none"> • Sleek, sporty, lightweight, soft touch temples • Wrap-around protection • Includes neck cord
3003294	SAFETY GLASSES – NOMADS – METALLIC RAINBOW <ul style="list-style-type: none"> • Stylish, lightweight • Detachable side shields • Mirrored lens, ideal for different light conditions
3004880	SAFETY GLASSES – ELEMENT – CLEAR
3004882	SAFETY GLASSES – ELEMENT – SMOKE <ul style="list-style-type: none"> • Lightweight, economical • Universal nose bridge • Available in reader lens
3005069	GOGGLES – MRVX CHEMICAL SPLASH – ANTI-FOG <ul style="list-style-type: none"> • Spherical lens provides more than 360 degrees of vision • Indirect vents offer splash protection • Polycarbonate lens
3005244	SAFETY GLASSES CORD – BLACK <ul style="list-style-type: none"> • Fits standard frames, adjustable fit • Available in small and large
3009541	ECONOMY GOGGLES <ul style="list-style-type: none"> • Dust and impact protection • Polycarbonate lens • Direct ventilation



3000048



3000287



3003294



3004880



3005069



3005244



3015022



3001749



3004286



3012918



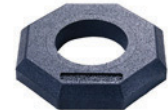
3006235

P/N	DESCRIPTION
3015022	SAFETY GLASSES – OVER THE GLASS – CLEAR <ul style="list-style-type: none"> Streamlined, stylish and comfortable New standard in over-the-glass eyewear Fits over most protective eyewear Integral side shields provide added protection
3001749	CONE HOLDER <ul style="list-style-type: none"> Holds no more than 10 18" cones or 5 28" cones only Mounting plate – 6.75" wide, height – 22" from bottom of mounting plate to top of holder Hardware not included
3004042	18" PLAIN CONE – ORANGE
3004043	18" TRAFFIC CONE W/REFLEXITE COLLARS – ORANGE
3004158	28" LIGHTWEIGHT PLAIN CONE – ORANGE
3004242	TRAFFIC CONE 7# WITH 6" & 4" REFLEX – ORANGE
3004258	28" TRAFFIC CONE 10# W/6" & 4" R – ORANGE <ul style="list-style-type: none"> Wide body design with rugged orange base Dayglow orange PVC with white inner lining
3004283	18" LIME GREEN TRAFFIC CONE
3004286	28" LIME GREEN TRAFFIC CONE <ul style="list-style-type: none"> Wide body design Dayglow fluorescent lime with white inner lining, increases awareness Differentiates work zone for added safety
3008307	36" TRAFFIC CONE W/6" & 4" REFLEX – ORANGE <ul style="list-style-type: none"> Available in yellow case with 360 degree amber or red lens Mounting bracket included Powered by single 6V lantern battery (not included) Flash rate of 120-150 flashes per minute Dimensions – 8" high x 3 1/4" diameter
3012918	4PK 18" COLLAPSIBLE CONES W/LIGHT BAG
3018159	4PK 28" COLLAPSIBLE CONE W/LIGHT BAG <ul style="list-style-type: none"> Internal cone light has 2 settings – steady burn and flashing Operates on 2 'AAA' batteries (included) Endures 100,000 flashes or 36 hours of steady burn Orange waterproof nylon assures visibility in any weather
3005542	200PK EAR PLUGS <ul style="list-style-type: none"> Soft foam earplugs offer comfort and protection Tapered shape offers easy insertion for any ear canal
3015089	VIBE 26 EAR MUFF
3015090	VIBE 29 EAR MUFF <ul style="list-style-type: none"> Padded headband adjusts to fit all head shapes and sizes Material retains shape and pressure for constant protection VIBE 26 – ideal for medium level noise VIBE 29 – ideal for high level noises
3006215	24" FLAG – RED <ul style="list-style-type: none"> 24" flag with weighted edge Available in silver reflective or non-reflective material 36" long dowel
3006235	AIRPORT FLAG 24"
30062535	AIRPORT FLAG <ul style="list-style-type: none"> Nylon flag with pocket to mount on existing staff Alternating checkerboard 12" x 12" squares in orange and white Dowel not included

P/N	DESCRIPTION
3006620	CAUTION TAPE 3" X 1000' ROLL YELLOW <ul style="list-style-type: none"> Economical, strong and disposable 3 inches wide x 1000 feet long x 2 mm thick
3007354	18" ALUM STOP/SLOW PADDLE <ul style="list-style-type: none"> Aluminum, silk screened paddles .080 guage baked aluminum Wood handle Assembly kit includes paddle, handle and hardware
3007368	24" STOP/SLOW PADDLE – SIGN ONLY <ul style="list-style-type: none"> Non-reflective Meets MUTCD requirements
3007772	24" STOP/SLOW PADDLE <ul style="list-style-type: none"> Meets MUTCD requirements 24" non-reflective ABS plastic handles
3009066	CHANNELIZER BASE 10# <ul style="list-style-type: none"> 16" octagonal base 10 lbs.
3014082	GRIP & GO 42" CHANNELIZER <ul style="list-style-type: none"> Utilizes space Grip and Go handle (1) 4" and (1) 6" hi sheeting
3008836	LED VEST <ul style="list-style-type: none"> Hook and loop front closure Flashing LED in 2 vertical strips on front and 1 vertical stripe on back Water resistant battery pouch Case holds 2 standard 'AA' batteries (not included)
3009945	ORANGE MESH ANSI CL2 VEST W/SILVER STRIP
3009946	ORANGE CL2 VEST W/SILVER STRIPE XL
3009948	ORANGE CL2 VEST W/SILVER STRIPE 3XL
3009951	LIME CL2 VEST W/SILVER STRIPE LARGE
3009952	LIME CL2 VEST W/SILVER STRIPE XL
3009954	LIME CL2 VEST W/SILVER STRIPE 3XL <ul style="list-style-type: none"> Standard style Hook and loop closures Silver bead reflective tape
3009988	VEST DELUXE CL3 W/SILVER STRIPE XL
3009989	VEST CL3 DELUXE W/SILVER STRIPE 2XL <ul style="list-style-type: none"> 4 pocket design Front zipper closure Durable mesh material
3010000	MESH VEST CL3 LIME W/SILVER STRIPE – XL
3010001	MESH VEST CL3 LIME W/SILVER STRIPE – 2XL <ul style="list-style-type: none"> Hook and loop front closure Silver bead reflective tape
3012877	LIME DELUXE CL2 TWO TONE VEST – M – XL
3012878	LIME DELUXE CL2 TWO TONE VEST 2XL – 5XL <ul style="list-style-type: none"> 3 pocket design Front zipper closure Adjustable panel-belt system for tailored fit over bulky clothes



3006620



3009066



3014082



3008836



3010000



3014742



3014755



3010943



3013113

P/N	DESCRIPTION
3017585	ORANGE ECONOMY VEST (NON ANSI)
	<ul style="list-style-type: none"> • Orange mesh • Non reflective
3017588	GP VEST LIME W/SILVER STRIPE
	<ul style="list-style-type: none"> • Lime mesh • 1/2" silver beaded
3017594	ORANGE VEST W/LIME STRIPE
	<ul style="list-style-type: none"> • Orange mesh • 1 3/8" lime prismatic
3017595	LIME VEST WITH ORANGE STRIPE
	<ul style="list-style-type: none"> • Lime mesh • 1 3/8" orange prismatic tape
3014742	ORANGE BARRICADE FENCE
	<ul style="list-style-type: none"> • Lightweight safety fence with oval openings • Size/Color: 4x100 Orange • Weight: 8.5 lbs
3014755	AUTO DARKENING WELDING HELMET – HEAVY METAL
	<ul style="list-style-type: none"> • Versatile • Sensitivity and delay adjustments • Variable shade Intellisense technology • 2 independent sensors • 4 x 5 cartridge fits Shadow and Halo X helmets
3018230	NITRO AUTO DARKENING HELMET
3018320	AUTO DARKENING WELDING HELMET
3000276	HARD HAT – AMERICAN EAGLE
	<ul style="list-style-type: none"> • Low profile • Graphic designed for long-lasting wear • Smooth dome design, low profile
3010943	COWBOY HARD HAT – WHITE
	<ul style="list-style-type: none"> • Meets ANSI Z89.1 • Fits all head sizes • Wide prim for protection from sunlight
3013113	ORANGE HI-VAZ CAP W/REFL STRIPE
3013114	LIME GREEN HI-VIZ BALL CAP W/REFLECTIVE STRIPES
	<ul style="list-style-type: none"> • Reflective ball cap • 2" wide silver beaded reflective tape • Breathable • Washable mesh fabric • Adjustable velco strap
3013362	CHARGER HARD HAT – WHITE
3013365	CHARGER HARD HAT – HI-VIZ ORANGE
3013370	CHARGER HARD HAT – YELLOW
3013416	CHARGER CAP – HI-VIZ ORANGE
	<ul style="list-style-type: none"> • Lightweight • Universal slots • Griptec™ coated bill
3014874	HARD HAT – FULL BRIM – WHITE
	<ul style="list-style-type: none"> • Lightweight • Smooth dome, leaves no crevices for buildup • Anti-glare bill • Absorbant cloth absorbs sweat